



# 3,131 SF OFFICE SUBLEASE OPPORTUNITY

2500 North Military Trail, Suite 455, Boca Raton, FL 33431  
Crystal Corporate Center | Central Boca Raton



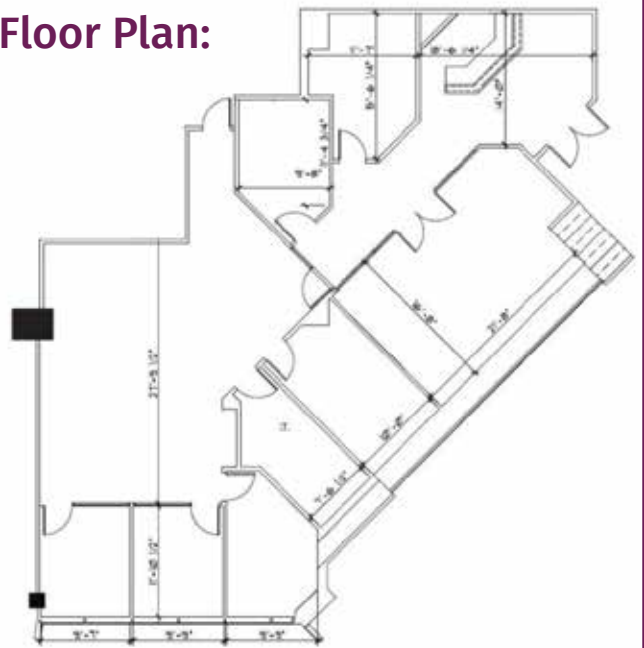
## PROPERTY FEATURES:

- 3,131 SF OFFICE SUBLEASE
- \$40 PSF, Full Service
- Fully Furnished – Turn-Key Space
- Open Plan, Private Executive Offices & Conference Room
- 5-story Class "A" office building in the heart of Central Boca Raton
- Just north of Interstate 95 (I-95) and Glades Road
- Easy access for commuters and locals
- Below market sublease rate through 8/31/2029
- On Site Cafe
- Within walking distance to restaurants, shops & hotels
- Near area's top universities
- 24/7 building access
- On-site property management
- Ample surface parking available
- Professional Class "A" building lobby
- Furniture Available – Move-in Ready
- Prestigious Boca Raton address



Scan QR for a  
Virtual Tour!

## Floor Plan:



**JACQUELINE NEWMARK-TAVARES**  
Newmark Commercial Real Estate  
**Lic Real Estate Broker**  
561 - 702 - 8187

[JNewmark@NewmarkCommercial.com](http://JNewmark@NewmarkCommercial.com)

Disclaimer: Although information has been obtained from sources deemed reliable, the owner, Newmark Commercial Real Estate, and/or their representatives, brokers, or agents make no guarantees as to the accuracy of the information contained herein and offer this information without express or implied warranties of any kind. All rights reserved. This is for informational purposes only.